



# Introduction



- **Comparison “ODOT Let” to a “State Exchange”**
  - Plan development
  - Plan review
  - Utilities
  - Environmental
  - ROW
  - Bidding
  - Construction engineering
  - Final inspection



# Introduction



- **Staddens 1.35 CEAO FY 18**
  - ODOT Let
- **York 0.40 CEAO FY 19**
  - Originally was ODOT Let
  - First project that used the State Exchange Program



# Staddens 1.35



**16' rise x 34' clear span x 65'  
length  
5' cover**



# Staddens 1.35







# York 0.40



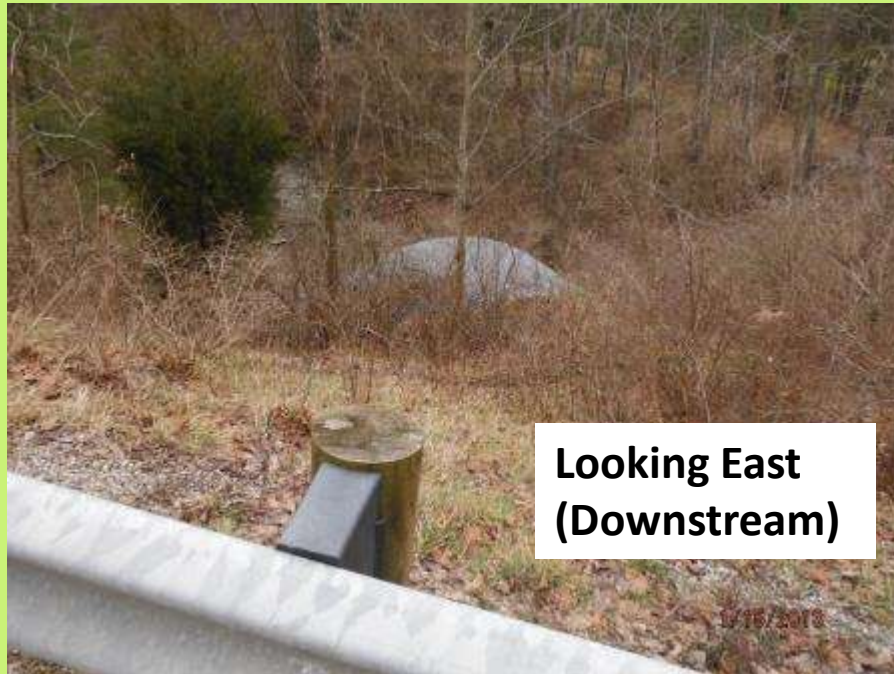
**18' rise x 28' clear span x  
150' length  
15' max cover**



# York 0.40



## York Rd – Saint Albans Twp before April 3, 2014







# York 0.40



## York Rd – Saint Albans Twp after April 3, 2014







# York 0.40



## York Rd – Saint Albans Twp after April 3, 2014







# York Road CR 39 0.40



- **Before 4/3/2014**

- This was an ODOT Let Project using CEAO FY 19
- Consultant Selection was underway and we had approval that the funding would be available before FY19

- **The night of 4/3/2014**

- The multi plate arch collapsed

- **On 4/8/2015**

- District 5 meeting
- Project was converted to State Exchange
- Emergency resolution



# Plan Development



- **ODOT Let**

- County, ODOT, and consultants
- PDP process is followed
  - 4 plan submittals
- Limited concurrent tasks
- CO letting schedule

- **State Exchange**

- County and consultants
- 2 plan submittals with phone calls or emails as needed
- County advertises and signs construction contract





# Plan Review



- **ODOT Let**

- Reviews at each stage by county, district, and/or C.O.
- Usually 30 days for each stage

- **State Exchange**

- County review only
- Review times are up to the local
- Review of final plans was concurrent with advertising of the construction project



# Utilities



- **ODOT Let verses State Exchange**
  - No difference, locals have to get utilities relocated for ODOT Let and State Exchange projects
  - For ODOT let we send all utilities correspondence to ODOT for their records





# Environmental



- **ODOT Let**
  - District 5 and consultant to complete the required submissions
  
- **State Exchange**
  - District 5 and county
    - ✦ SHPO letter
    - ✦ USACE permit
    - ✦ No category 2/3 wetlands
    - ✦ Endangered species signoff as part of the USACE permit



## ROW



- **ODOT Let**

- 3 parcels
- Total of .1 acres
- Consulting fees \$11,991
- Payment to landowners \$900 (valued \$120 total)
- Total cost \$12,891
- Cost per acre \$128,910
- 7% of cost went to landowners

- **State Exchange**

- 3 parcels
- Total of .315 acres
- Consulting fees \$2,250
- Payment to landowners \$2,520
- Total cost \$4,770
- Cost per acre \$15,143
- 53% of cost went to landowners



# CURVE DATA

P.I. Sta. 13+97.98

$\Delta = 6^{\circ}34'48''$  (LT)

$D_c = 2^{\circ}15'00''$

$R = 2,546.48'$

$T = 146.38'$

$L = 292.44'$

$E = 4.20'$

$C = 292.28'$

C.B. =  $N 14^{\circ}47'09'' W$

AGRICULTURAL

①

ARVILLE K. & RACHEL A.  
FELUMEE, TRS.  
081 STADDENS BRIDGE RD  
NEWARK, OH 43056  
I.N. 200612280037127  
481-5917400000

FIELD LINE

Ex R/W

$1^{\circ}29'45'' W$

STADDENS BRIDGE RD (CR-315)

CONST. LIMITS

Ex R/W

LINE

EX-12" CMP TO  
BE REPLACED

ASPHALT  
TYPE 1  
DRIVEWAY

AGRICULTURAL

②

GHLEE A. LYONS  
12363 STADDENS BRIDGE ROAD  
NEWARK, OH 43056  
O.R. 168 PG. 792  
0481-6000800001

BEGIN PROJECT  
STA. 13+25.00

BEGIN ACQUISITION  
STA. 13+60

END PROJECT  
STA. 15+00.00

END ACQUISITION  
STA. 14+50

EX. CMP ARCH CULVERT  
(TO BE REMOVED)

CONST. LIMITS

Ex R/W

Ex R/W

13+97.82  
4.20' RT

14

14+58.67  
0.17' RT

$N18^{\circ}38'16'' W$

$N19^{\circ}15'46'' W$

PROP. PRECAST CONCRETE  
ARCH TOPPED CULVERT

IP Fnd & Used  
(Sta. 14+63.22, 29.5)

EX. GAS LINE TO BE  
RELOCATED BY OWNER

GRAVEL DRIVE

FUEL STORAGE  
TANK

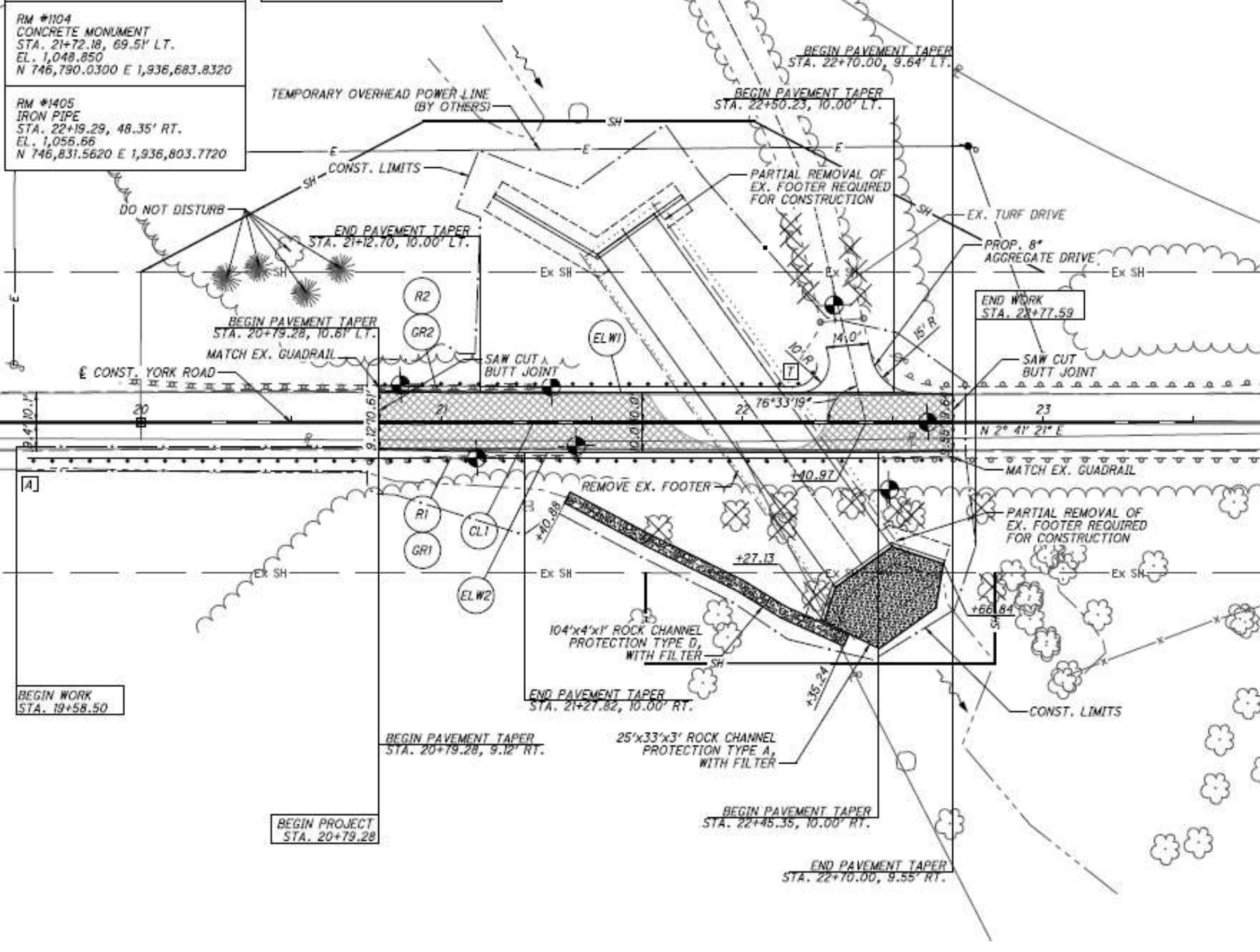
CLAY LICK

CREEK

LICKING COUNTY  
MADISON TOWNSHIP, LOT 4  
USML T-2, R-11, QTR. TWP. 4

NOTE: TH  
WE  
AD  
MO

RM #1405  
IRON PIPE  
STA. 22+19.29, 48.35' RT.  
EL. 1,056.66  
N 746,831.5620 E 1,936,803.7720





# Bidding



- **ODOT Let**
  - Final plans completed on 3/3/2014
  - Bid opening 6/26/2014
- **State Exchange**
  - Final plans completed on 8/6/2014
  - Bid opening 8/21/2014
- Addendums and change orders are acceptable to the county





# Bidding



- **ODOT Let**
  - State estimate \$370,000
    - ✦ \$408,846 low bid
    - ✦ \$413,112 second bid
- **State Exchange**
  - Engineers estimate \$864,744
    - ✦ \$618,951 low bid
    - ✦ \$622,862 second bid



# Construction Engineer



- **ODOT Let**

- Construction Engineering is performed by ODOT
- Staddens project cost was \$46,000
- County perform site visits during construction

- **State Exchange**

- Construction Engineering by County
- County hired a consultant to perform sub-base compaction testing
- Consultant costs \$4000



# Final Inspection



- **ODOT Let**

- ODOT coordinates punch list with the contractor
- Final walk through with the county to accept the bridge

- **State Exchange**

- County coordinates punch list with the contractor
- Final walk through with ODOT to sign off on the project



# Schedule Comparison



- **ODOT Let**

- 5/7/13 Design scope finalized
- 8/29/13 Stage 1 plans
- 8/29/13 ROW plans complete
- 2/14/14 Eco complete
- 5/20/14 ROW acquisition complete
- 3/3/14 Final plans received
- 5/12/14 Plan package CO
- 6/12/14 Project advertised
- 6/26/14 Open bids
- 7/2/14 Award
- 7/30/14 Contract signed

- **State Exchange**

- 4/3/14 Culvert Failed
- 4/21/14 Design scope finalized
- 7/2/14 ROW plans complete
- 7/10/14 Stage 1 plans
- 7/12/14 Three landowner notified
- 8/6/14 Final plans received
- 8/6/14 Project advertised
- 8/21/14 Open bids
- 8/26/14 Award and contract signed
- 8/27/14 Pre-con meeting





# Summary



- **ODOT Let**

- Number of days from design scope to signed construction contract
  - 449
- Number of days from ROW plans to complete ROW acquisition
  - 264

- **State exchange**

- Number of days from design scope to signed construction contract
  - 127
- Number of days from ROW plans to complete ROW acquisition
  - 41



# Summary



- **State Exchange**
  - Expedite projects
  - Majority of our structures are 4 sided boxes or composite box beam bridges
  - ROW acquisition using ORC instead of CFR
  - No differences when it relates to utilities
  - Environmental is simplified
  - Bidding time can be reduced
  - If you have the capabilities to do construction engineering at the county level there is a reduction in project cost



# Questions



- Michael Bline, P.E.
- Licking County Bridge Engineer
- [mbline@lcounty.com](mailto:mbline@lcounty.com)
- 740-670-5284
- <http://www.ceao.org/aws/CEAO/pt/sp/cstpprograms>