



COUNTY ENGINEERS ASSOCIATION OF OHIO

"ALL TRAVEL STARTS AND ENDS ON A LOCAL ROAD"

Affordable Vehicle Tracking and Sensor Logging Using GIS Software

Scott Bressler
Operations Deputy
Butler County Engineer's Office



Butler County, Ohio

County Size – 469 Square Miles

County Maintained Roads – 267 miles

Fleet Size – 47 Vehicles

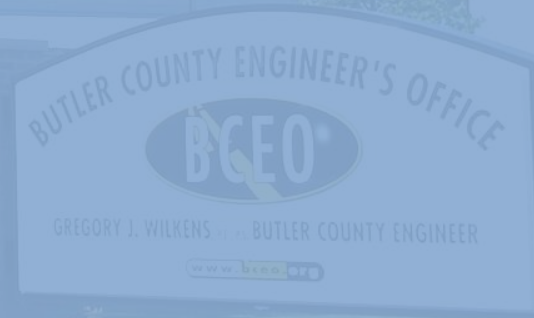
Mower Trucks – 5

Tractors - 8

Snow Vehicles - 16

Dump Trucks - 6

Other - 12



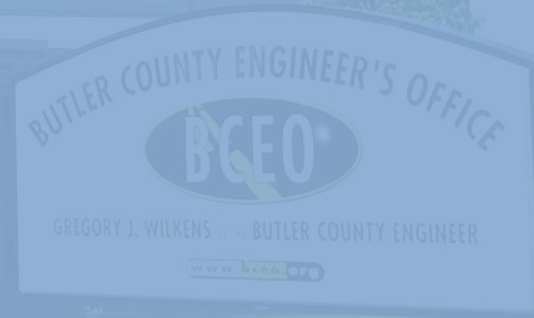
OBJECTIVES

Purpose

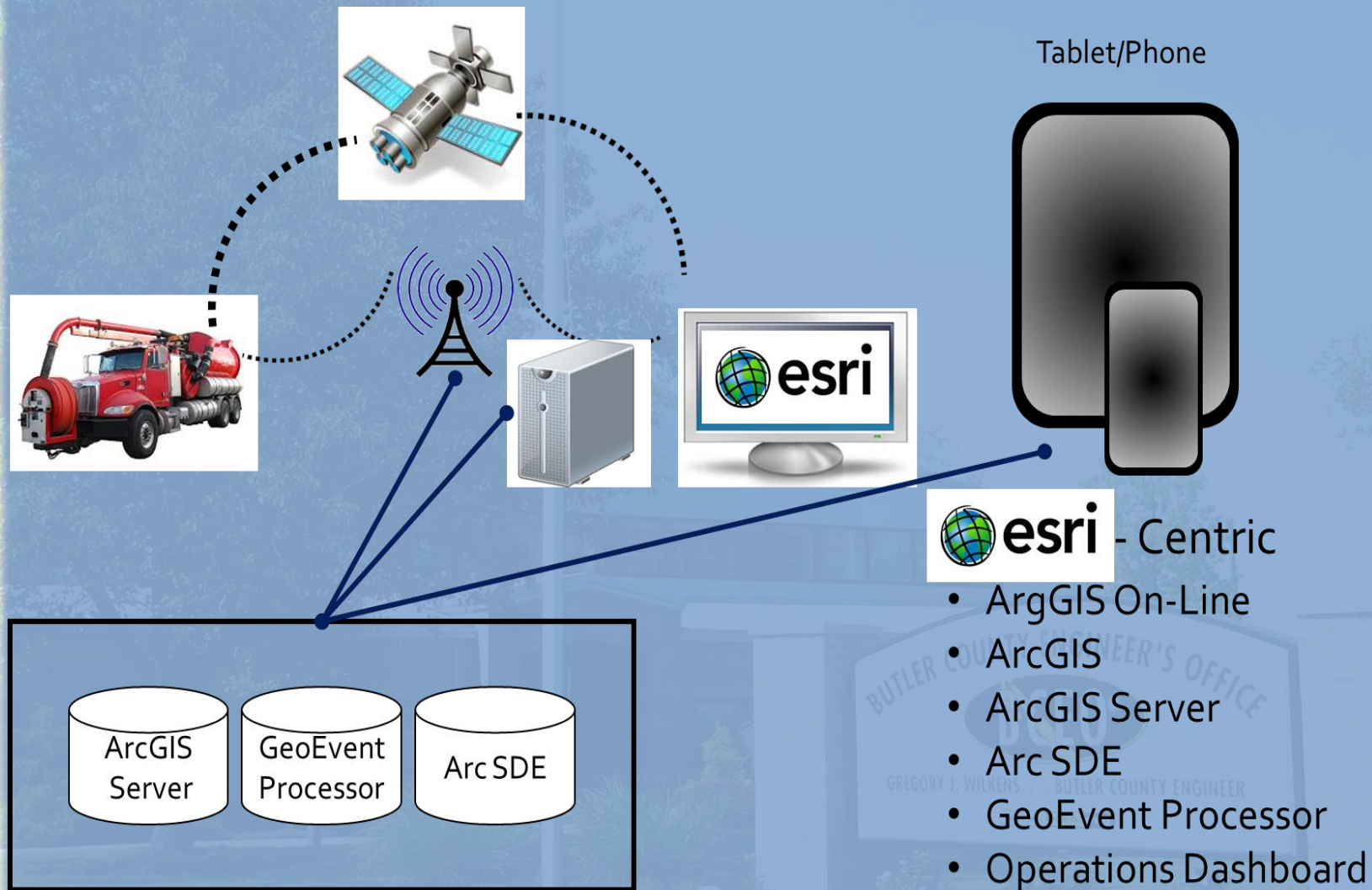
- Report vehicle locations
- Track vehicles (snow/mowers)
- Aid in citizen inquiries

Motivating Factors

- Increase productivity
- Safety feature
- More efficient routing



How It Works



Development

- How can we leverage ESRI software that we already own
- Find a GPS device that works with ESRI's GeoEvent Processor (GEP)
- Find a GPS device that sends data directly to our server
- Program the devices and software to send and accept data
- Develop a database structure that gives the results that we want



GPS Devices – Novatel Wireless



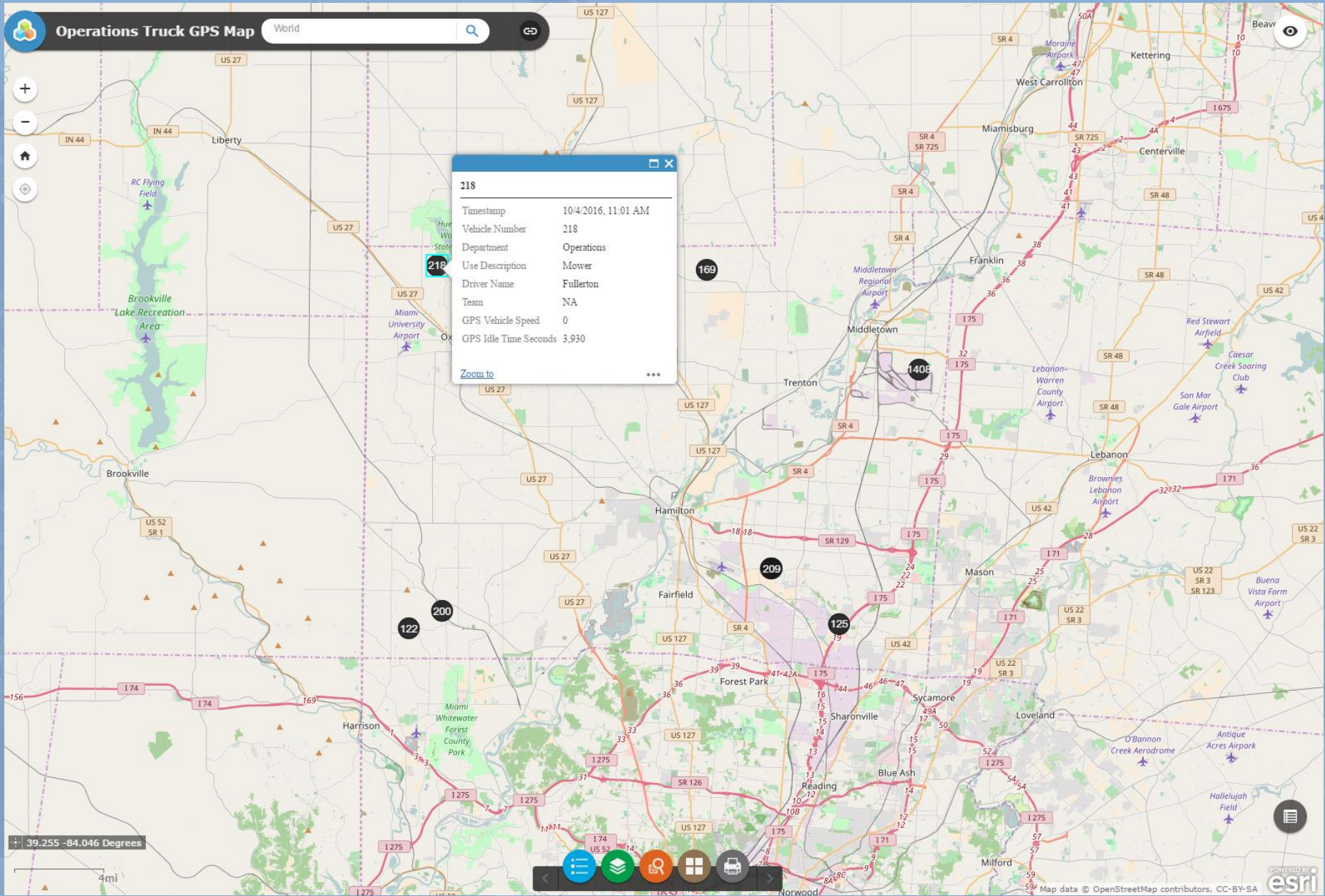
Enfora MT3050

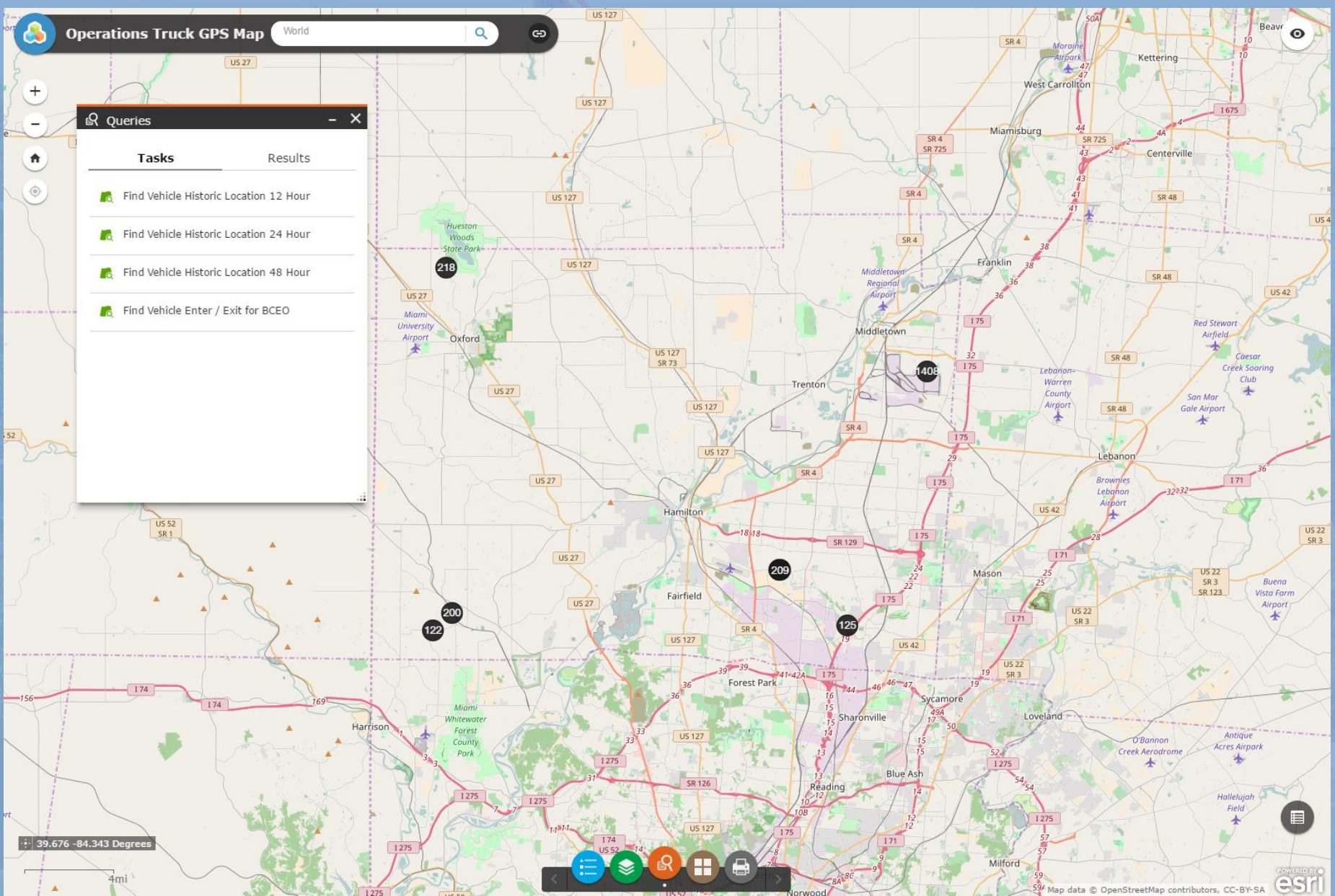


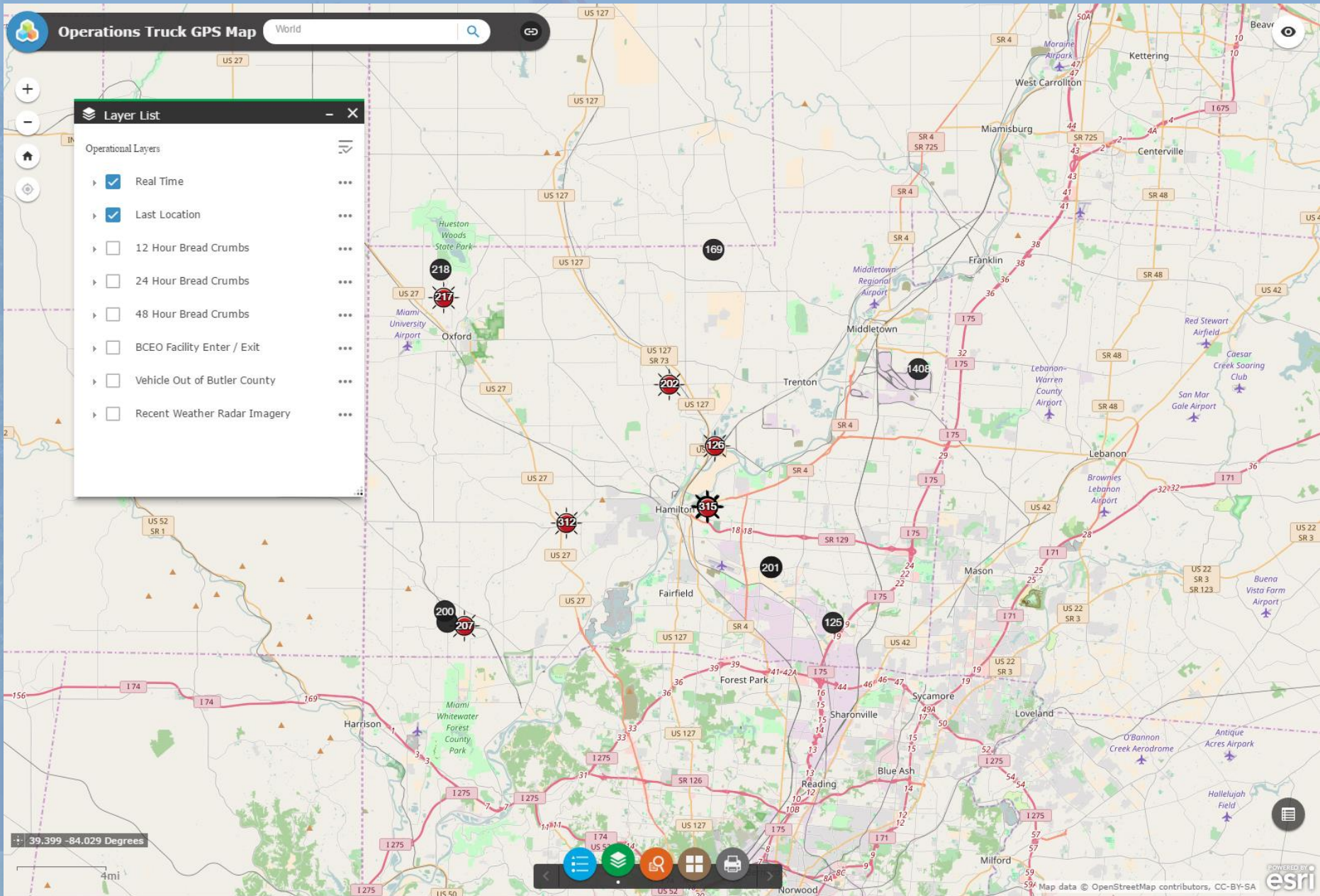
Enfora MT4100

GPS Device Information

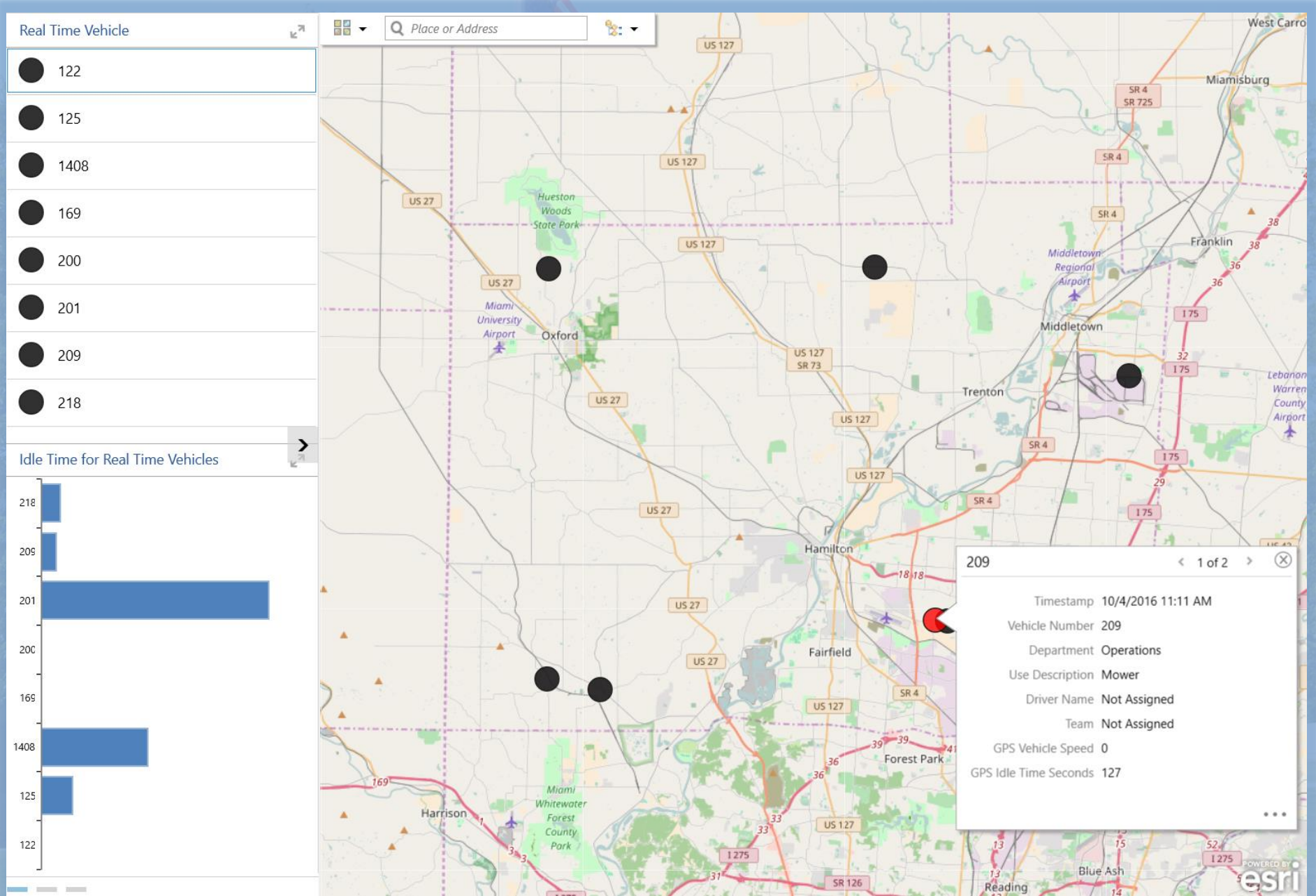
- **Verizon Data Service**
- **GPS devices send data every 30 seconds (this can be changed)**
- **Turn off vehicles that are not in service temporarily (snow trucks in summer/mower in winter)**
- **Average price for devices \$120.00**
- **Data contains GPS location information and vehicle engine information (OBD)**







2016 Superintendents & Mechanics Conference & Trade Show OCTOBER 19 - 20



Benefits

- No third party reporting software
- Same as current GIS data
- Open and configurable
- High level of SECURITY
- Data contained local for analysis and activity to other systems

YOU OWN YOUR DATA

GPS to GIS



Live Web Application

[BCEO Vehicle GPS Map Link](#)

BCEO Vehicle GPS Map Video

Resources

Scott Bressler
Operations Deputy
Butler County Engineer's Office
bresslers@bceo.org

Lydia Thacker, P.S.
Tax Map / GIS Manager
Butler County Engineer's Office
thackerl@bceo.org

Larry Rover
GIS Director
RA Consultants
lrover@raconsultantsllc.com

