

Brown County Engineer

Todd A. Cluxton, P.E., P.S.

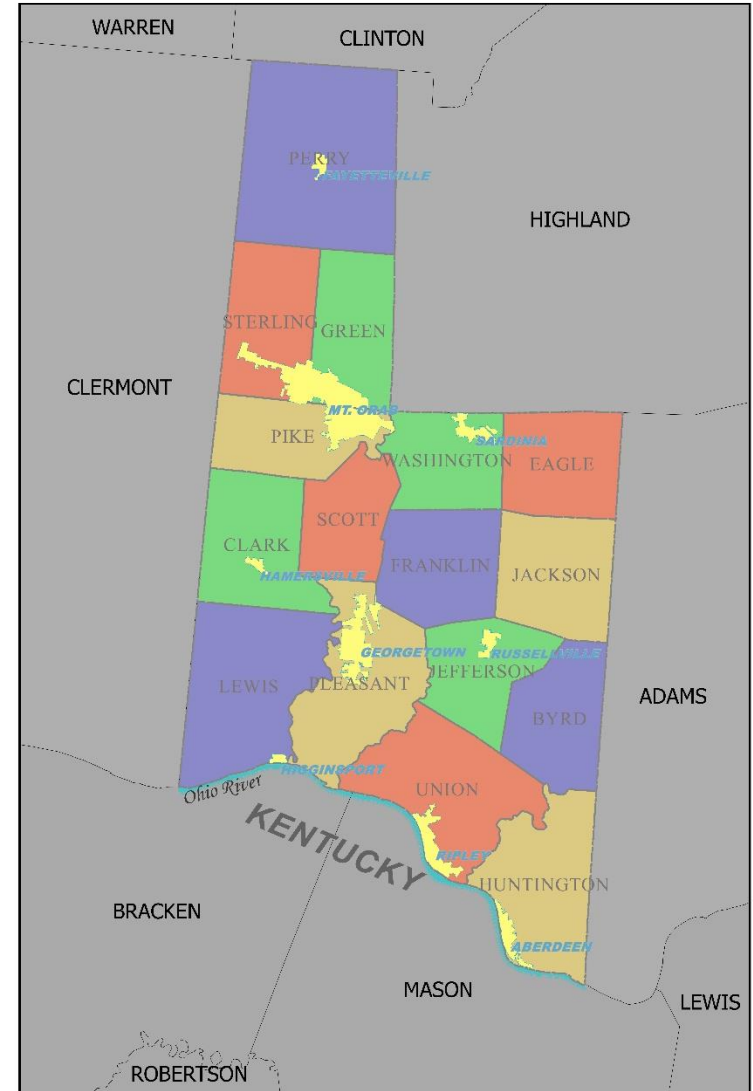


Presented by
Todd A. Cluxton, P.E., P.S.

Brown County

Georgetown, Ohio

- Rural
- Population 44,247
(2015 Estimated Census)
- 336 miles of county roads
- 388 miles of township roads
- 380 bridges
- 4,436 culverts
- \$ 4.4 Million Operating budget



Employees

36 Total Employees

Road Crew	19
Office Staff	6
Maintenance	3
Bridge Crew	5
Tax Map	3



FACILITY

- County Engineer/Highway Department
- Built in 2004



FACILITY

- Renovated 2007



FACILITY

- TRUCK STORAGE



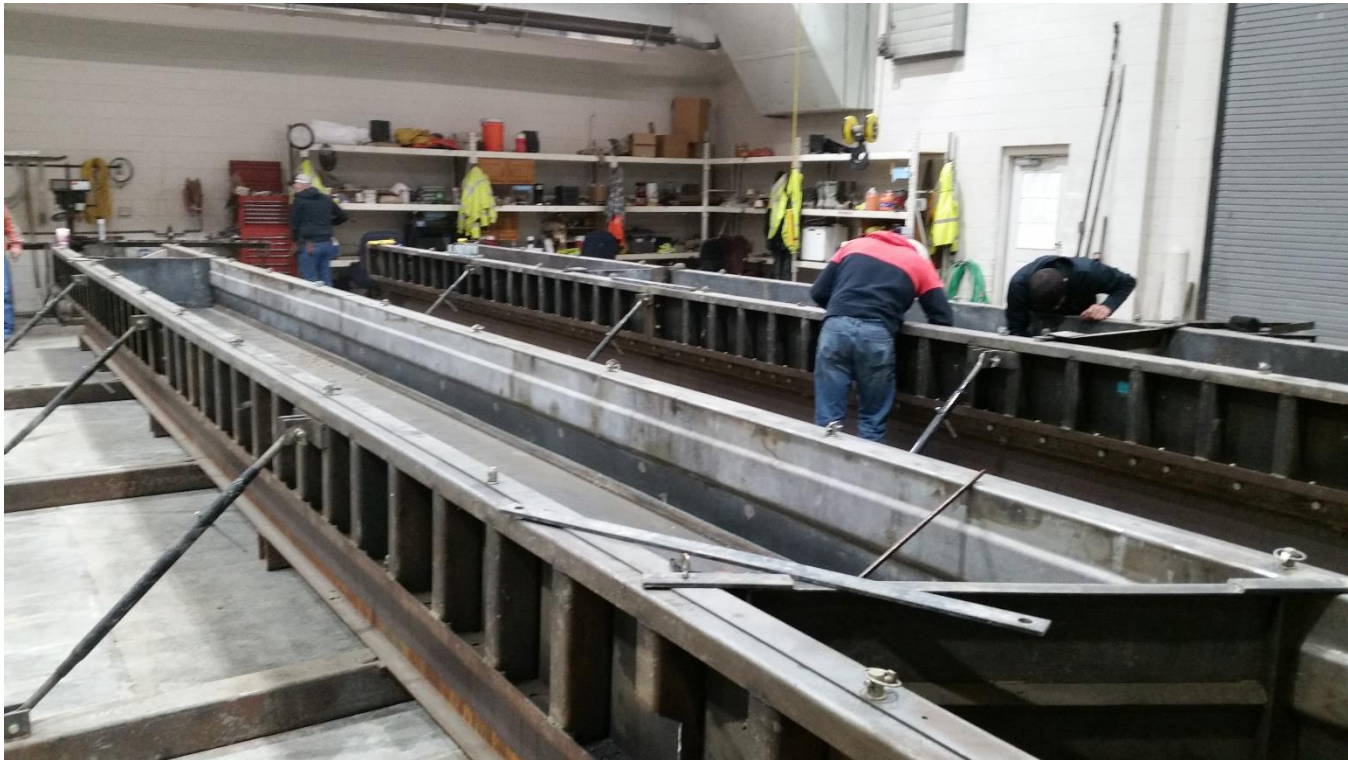
FACILITY

- 3 BAY SHOP
- OIL CHANGE PIT
- 2 TON
OVERHEAD
CRANE
- LUB RACK
- TIRE CHANGER



FACILITY

- BRIDGE / PRECAST ROOM
- 10 TON OVERHEAD CRANE



FACILITY

- 5,000 TON CAPACITY SALT DOME



FACILITY

- FUEL ISLAND

2 Key System (Pertrovend K800 Chip Key System)



Equipment

- T870 BOBCAT
- Fork Attachment
- Auger Attachment
- Post Driver Attachment
- Soil Conditioner
- 6 way blade
- Snow plow
- Concrete pump



Equipment

- CRACK SEALER



Equipment

- CHAMPION ROAD GRADER



Equipment

- CASE 1150G DOZER



Equipment

- 3 KOBELCO EXCAVATORS



Equipment

- 2 CASE 721 END LOADERS



Equipment

- 2 GRADALL EXCAVATORS







Equipment

- 8 John Deere Tractors



Equipment

- Traffic Lights





















Design
Construction
Maintenance



- Culverts

- Reinforced concrete
Round , Elliptical, 3 and 4
sided boxes

- Bridges

- Reinforced Concrete Beams
- Prestressed Concrete Box
Beams
- Reinforced Concrete 3 and 4
sided boxes
- Galvanized Steel Beams







- Culverts
 - All Concrete
 - Concrete Backfill



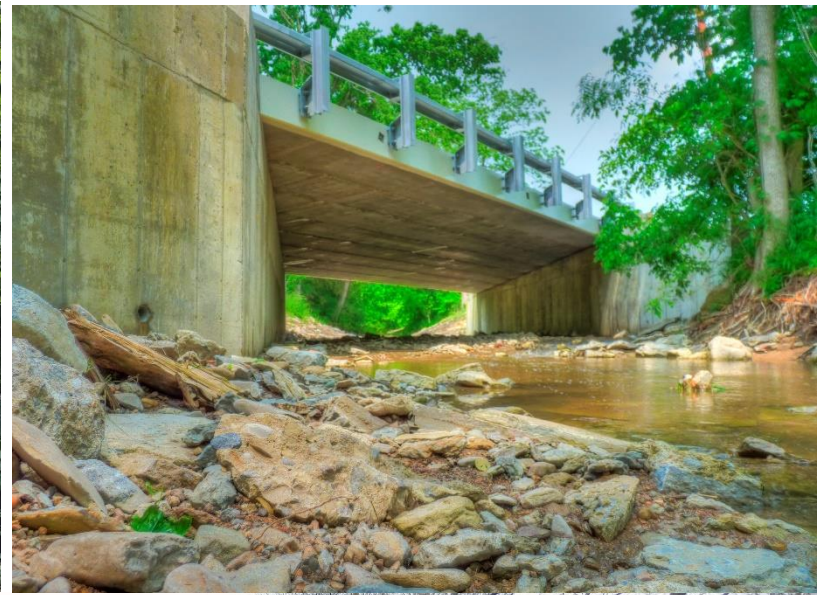
- Township Projects



- Widening



- Projects





- Covered Bridges
5 Total
3 Open To Traffic



County Monuments

- Approximately 70 monuments



County Monuments

- Topcon GR-3
- Topcon Hyper SR
- Topcon GRS-1



Questions ?

